

The

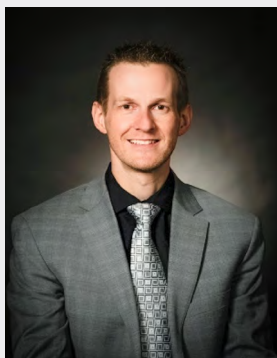
DME DISPATCH

Memorial's Distributed Medical Education Newsletter

Fall Workshop, Fogo Island

TOWARD
Adventure

Summer 2025 / bit.ly/MemorialDME



ASSISTANT DEAN NEWS

The Office of Distributed Medical Education is pleased to bring you the spring edition of the DME Dispatch. Our team has been working very hard with the Faculty of Medicine and our community partners as we strive to provide more robust learning experiences across our sites. Much of our focus over the past few months has centered on enhancements to currencies of recognition and support for our distributed faculty members,

in addition to improved diversity and enjoyment of the rich experiences for our learners. We are looking to build on key components of faculty engagement after having had a very successful Preceptors' Symposium in the fall of 2024.

Site tours with the Dean's Office are ongoing, and the feedback we are receiving from faculty, staff and learners is contributing to the positive changes you will see as we embark on the implementation of our new Strategic Plan: Grounded in Excellence. We are hopeful to bring you



Northern visit, Oct. 2024
St. Anthony, Goose Bay, North West River & Sheshatshiu. Left to right: Dr. O'Keefe, Vice Dean of Education and Faculty Affairs, Kyla Battcock (DME – Labrador), Brian Halley (Coordinator, DME), Dr. Dolores McKeen (Interim Dean, Faculty of Medicine), Dr. Andrew Hunt (Assistant Dean, DME).

favorable changes in preceptor remuneration, learner housing and travel and rural research. Longitudinal Integrated Clerkship planning for learners in Newfoundland and Labrador is well underway and poised to commence in August of 2025. There are many adventurous paths to take with DME, and the 2025 journey is just getting started!

Please join us as we continue to embark on our journey through exciting educational experiences with Distributed Medical Education (DME).

I invite you to share your ideas for DME with me at:
dmeassitantdean@mun.ca

*Dr. Andrew Hunt, Assistant Dean
Distributed Medical Education, Faculty of Medicine*



DME LEAD - UPDATES AND HIGHLIGHTS



DR. SARAH SMALL, DME LEAD, EASTERN REGION

Greetings from the Eastern Stream!

We've had an exciting year and are eager to build on that momentum with even more events in the months ahead.

In March 2024, Obstetrics and Gynaecology residents gathered in Clarendville for their resident retreat. Later, in September 2024, we hosted the Eastern Stream Family Medicine Resident Workshop in Bay Roberts, which saw 32 R1s and R2s, along with faculty and staff, in attendance. We're grateful for the participation of distributed faculty from the Bay Roberts area across various disciplines. The workshop included a full day of simulations and lectures on topics such as obesity management, trauma, and practice management. Looking ahead, we're excited about the Family Medicine workshop in St. John's in May 2025.



*Top row: Dr. Amanda Tzenov (Assistant Professor & Assistant Dean for Admissions), Amalia Riggs, Dr. Joel Koops (Assistant Professor), Keihan Power, Adam McGuire, Dr. Renelle Butt (Assistant Professor), Timothy Brennan and Dr. Sarah Small (Assistant Professor & Distributed Medical Education Lead).
Bottom Row: Emma Walsh, Katherine Smith, Rebecca Squires, Sarah Smith.*

On the undergraduate side, the Rural Medicine Interest Group (RMIG) hosted their Rural Medicine Summit in Carbonear in January 2025. The event brought together 50 learners and local faculty for a weekend focused on rural healthcare and community connections. We're also working on bringing back the "Wilderness Weekend" course for second-year medical students, and we are in the planning stage to implement the first longitudinal integrated clerkship rotation for third-year students in Newfoundland and Labrador.

In the fall of 2024, distributed faculty from across the province came together for the first Preceptors Symposium in several years. It was a valuable opportunity for faculty to network, and we're excited about similar events in the future.

A big thank you to all our dedicated faculty for their continued commitment to medical education, and a special thank you to APA's Cassandra Ingram and Jackie Fewer for their unwavering support in keeping our region running smoothly.

LEARNER MOMENTS

When we talk about what it means to be a rural family physician, we often focus on the breadth of practice. We chose a residency in rural Newfoundland for the exposure to broad scope family practice, incorporating low-risk OB, emergency medicine, hospitalist, long-term care, and clinic into our regular weekly schedules. We came for the breadth, but we will be leaving with so much more.

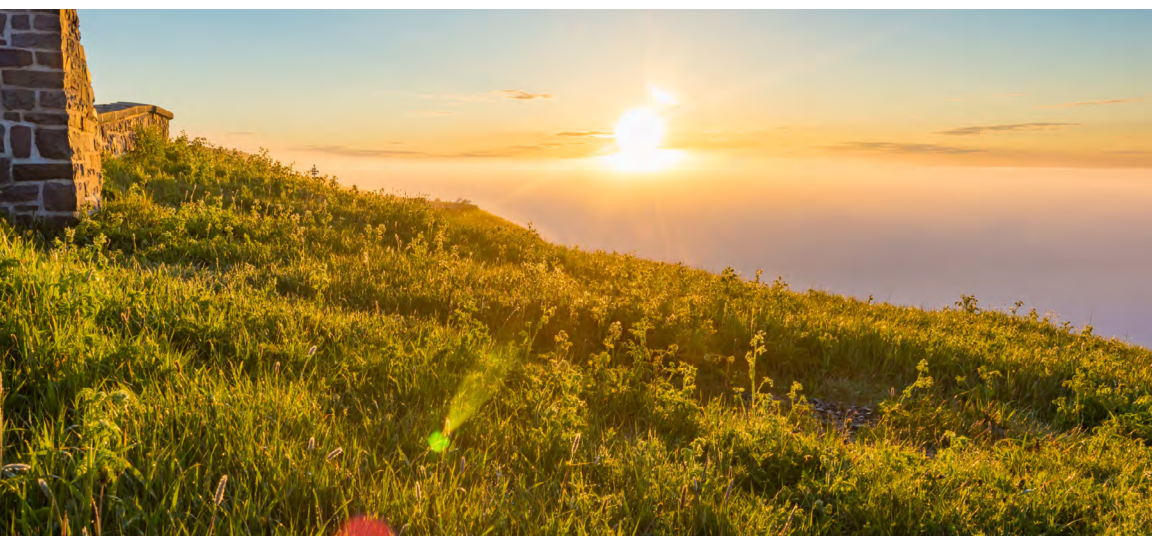
We could write a novel about the Central Newfoundland Family Medicine Stream (CENFAM) as a program, about the incredible support and teaching from local physicians, and about the community we now call home; but instead we will focus on a biannual event that exemplifies all the best attributes of rural family medicine, and specifically CENFAM: the resident retreat.

As residents in CENFAM, we are not often all in the same place. While one of us is doing an OB rotation in Grand Falls-Windsor, another may be doing pediatrics in Gander, family medicine in Twillingate, or ER in Botwood. But, twice a year, all the CENFAM residents, with some local physician volunteers, gather to share in an educational and community-building experience full of learning, laughing, fun, and food.

This year, our fall retreat was on Fogo Island (photo on cover). Our retreat began with learning: a procedural skills workshop including chest tube placement (in pork ribs) and ultrasound-guided line insertion (in tofu). This was followed by an emergency medicine simulation, a toxicology discussion, and of course, lunch. The environment is the perfect balance of professional and casual; where we can practice in a low-stakes environment, ask questions, make mistakes, and learn from experience.

CENFAM knows how to work hard and play hard, so after a day filled with teaching, we explored the Fogo Island Inn, braved the elements for an evening bonfire, and got to know each other outside of medicine. While we are ultimately all here to learn medicine, the emphasis on community in this program is what sets it apart. In Central Newfoundland colleagues become friends, mentors, and allies within rural medicine. We came to rural Newfoundland for the breadth of practice, but what we will leave with is a family.

Katherine Sutton (R1, Twillingate) and Caitlin Sullivan (R2, Botwood)



FACULTY SPOTLIGHT



Dr. Holloway, attending to a young patient.

Dr. Philip Holloway – Old Perlican

Dr. Philip Holloway is originally from Musgravetown, NL; however, during his high school years he moved to the small rural town of Lower Island Cove. It was here that he would meet both his future wife, Krista, as well as be introduced to the site of his future medical career at the Dr. A.A Wilkinson Memorial Health Centre.

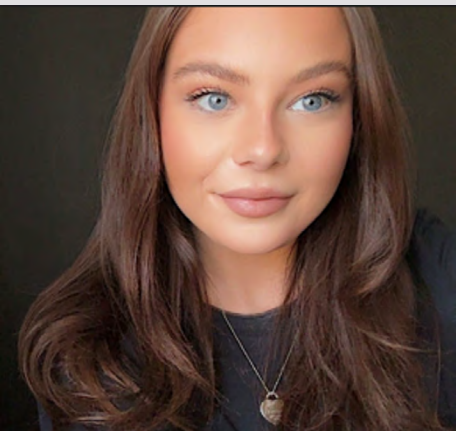
He is a graduate of Memorial University, where he completed both his Bachelor of Music (2010) and Doctor of Medicine (2014) degrees.

Following his residency in Family Medicine he started practicing in Old Perlican, where he has a full-time family practice clinic, in addition to providing Category B emergency room coverage. He also provides weekly coverage at the Carbonear General Hospital, working in their very busy Category A emergency department. As if all this wasn't enough, he has also found time to be a dedicated preceptor to eager medical learners and PRA candidates, in addition to being the Division Head of Family Medicine-Rural Avalon Region.

Dr. Holloway has been instrumental in creating a highly sought-after teaching site, where students get exposure to clinic, emergency room, and inpatient coverage. Medical learners have expressed that their time in Old Perlican has been some of the best of their medical school journey, and this is owed entirely to Dr. Holloway and his team's tireless effort to create a program that has inspired many to consider what it is to be a rural generalist.

When not at the hospital, (believe it or not he DOES get time at home), he can be found tinkering with a project in his garage, coaching his son's hockey team (Go Ceebees Minors!), or volunteering alongside Krista at the local rec centre trying to make the community a better and more fun place for his kids to grow up. He is the true definition of a medical and community leader, all while maintaining his homegrown, rural boy charm.

DME ANNOUNCEMENTS



INTRODUCING MAKAYLA MOORE – ACADEMIC PROGRAM ADMINISTRATOR, DISTRIBUTED MEDICAL EDUCATION

The Department of Distributed Medical Education (DME) is pleased to introduce Makayla Moore to our faculty, administration, and the medical learners she is currently supporting.

Based in Grand Falls-Windsor, Makayla has been a valued member of the DME office for nearly a year. Makayla plays a vital role in coordinating our medical learners' clinical

rotations for Grand Falls-Windsor and the surrounding area. Her work helps to ensure a high-quality educational experience for the learners, which also benefits the communities they practice in.

“Since joining the DME team, Makayla has consistently demonstrated initiative and a strong willingness to learn. She continues to grow in her role and is quickly becoming an integral part of our team.” - DME Team Member

Makayla can be reached at dme.centralwest@mun.ca or 709-541-6092.

INTRODUCING PAIGE SESE – HOUSING COORDINATOR, DISTRIBUTED MEDICAL EDUCATION

The department of Distributed Medical Education is pleased to announce that Paige Sese has accepted a new role within DME as our Housing Coordinator.

Paige has transitioned from her previous role as Scheduling Coordinator to now overseeing DME housing. In her new role, she helps to ensure that our medical learners have access to clean, comfortable, and safe accommodations while completing their rotations at our distributed sites.



We're excited for Paige and look forward to her continued contributions to the learner experience.

UPDATES



DISTRIBUTED MEDICAL EDUCATION

ANNUAL PRECEPTORS' SYMPOSIUM (2025)



OFFICE OF PROFESSIONAL & EDUCATIONAL DEVELOPMENT
Faculty of Medicine

THE ANNUAL PRECEPTOR SYMPOSIUM IS RETURNING IN 2025

St. John's
September 25 and 26



HAVE YOU HEARD OF ANY RURAL FACULTY IN YOUR REGION WHO HAVE RECEIVED AN AWARD OR SPECIAL RECOGNITION?

THE DISTRIBUTED MEDICAL EDUCATION (DME) OFFICE WOULD LOVE TO KNOW!

Please send a brief explanation and a photo (if available) to: dmecoordinator@mun.ca

OVER THE NEXT FEW MONTHS, WE'LL BE UPDATING OUR WEBSITE WITH NEW CONTENT AND HELPFUL RESOURCES TO BETTER SUPPORT MEDICAL LEARNERS AND FACULTY AT ALL OF OUR DISTRIBUTED SITES. STAY TUNED FOR NEW UPDATES!

- About Us
- Future Learners
- Current Learners
- Disciplines and Divisions
- Administrative Departments
- Research
- Alumni

Home / Administrative Departments / Distributed Medical Education / Supporting Learners

Admissions

Undergraduate Medical Education (UGME)

Postgraduate Medical Education (PGME)

Graduate Studies

Learner Well-Being and Success

Communications and Media Relations

Competency-Based Medical Education

Clinical Learning and Simulation Center (CLSC)

Supporting Learners

Distributed Medical Education supports learners visiting distributed sites by assisting with collating documentation, setting up orientation with the Newfoundland and Labrador Health Services and ensuring that learners rotations are confirmed and accommodations are arranged wherever possible.

Through our administrative work, Distributed Medical Education has created a series of policies and procedures to ensure the equity of all learners completing distributed rotation and to ensure that learners are provided with rich learning experiences while completing distributed rotations.

Distributed Medical Education currently oversees the following policies within the





JOIN THE ADVENTURE!

DISTRIBUTED MEDICAL EDUCATION
Faculty of Medicine
Memorial University of Newfoundland
St. John's, NL, Canada A1B 3V6
709 864 3486
dme@mun.ca
bit.ly/MemorialDME

